

# WHOLE SCHOOL APPROACH TO MHWB AT HANLEY, ST LUKES

## Our environment, routines and support

- Positive connections & relationships
- Quality First Teaching / Class Teacher Support
- Whole School Christian Distinctiveness
- Engaging & Inspiring Environment / Positive rewards & Celebrations
- Pastoral Team / SG meetings
- Staff Support & Wellbeing Charter (LINK?)

## Our curriculum, policies and procedures

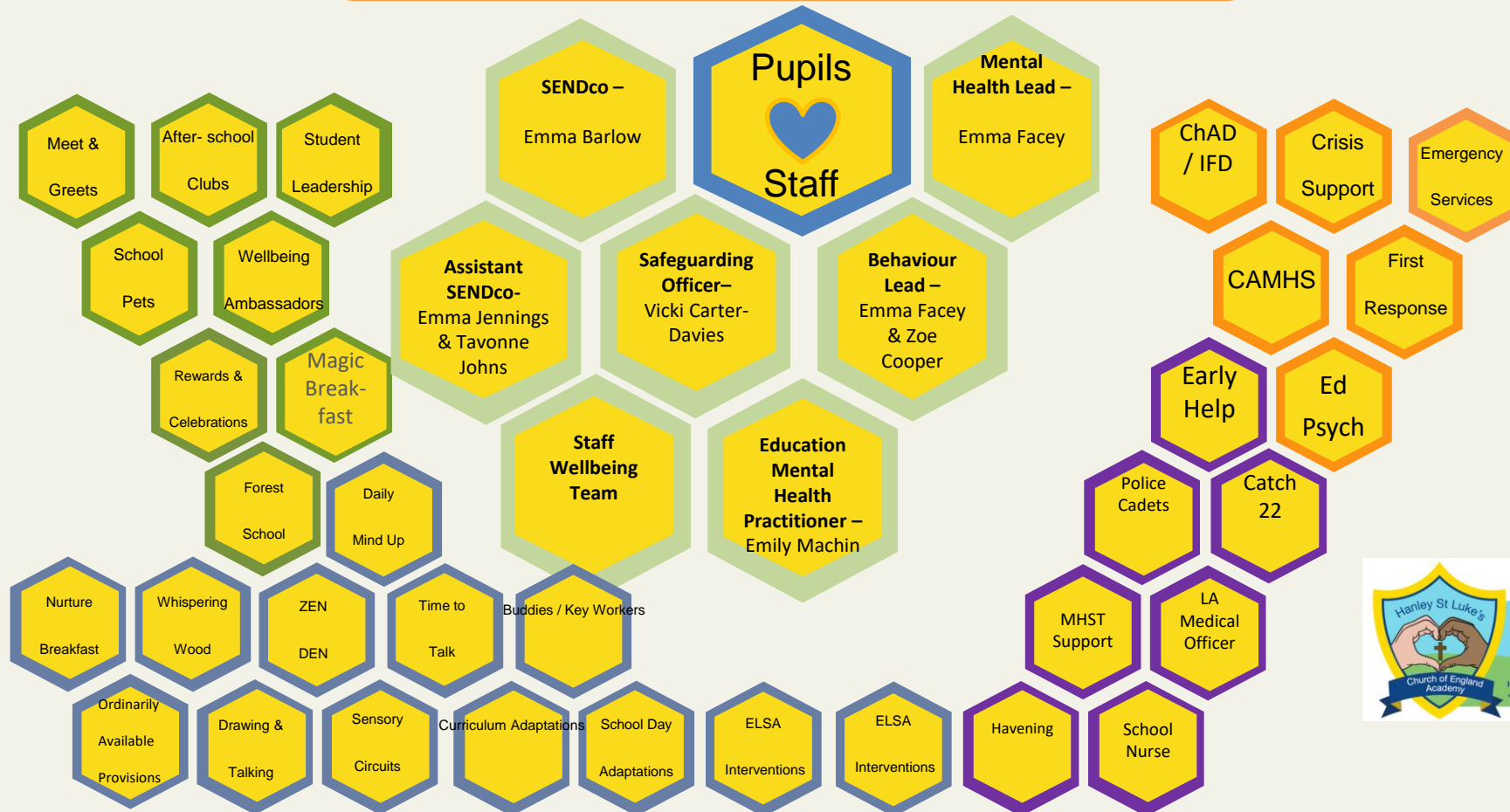
- Engaging Curriculum & PSHE delivery (LINKS?)
- Relational Approach & Behaviour Policy LINK?
- Regular voice gathering – staff, pupils, parents/carers
- SEND Policy LINK?
- SG Policy :LINK?
- Staff Policies LINK?

## Our home & family partnerships

- Communication Policy LINK?
- DOJO & Website LINK?
- Attendance Champions & strategy (LINK?)
- School Link Support

## MENTAL HEALTH & WELLBEING SUPPORT

SEND Team



Safeguarding Team



# Mental Health and Wellbeing - External Support Links

## Mental Health Pathway

[Staffordshire Connects | Children's mental health support pathway](#)

## Bereavement

DOVE Bereavement Counselling and Support - 01782 914 455  
[Parents and Professionals | The Dove Service - Counselling](#)  
Windmills Charity – 01782 433 435  
[Referrals – Windmills Charity Stoke-on-trent Staffordshire](#)  
Winston's Wish – 01242 515 157  
[Grief support for young people | Winston's Wish](#)

## Relationships & DV

New Era Domestic Abuse Service – 0300 303 3778  
[New Era – New Era is the new holistic Domestic Abuse](#)  
Just Family – 01782 939 183  
[Just Family | Wellbeing for Children, Parents & Families](#)  
Staffordshire Survive - 0300 330 5959  
[Sexual Violence and Abuse – Staffordshire Women's Aid](#)

## SEND Support

SENDIASS SEND information, support & advice service– 01782 234701  
[Home – SENDIASS](#)

## Drug & Alcohol Support

CDAS Community Drug and Alcohol Service – 01782 283113  
[Young people services - Stoke-on-Trent Community Drug and Alcohol Services](#)

## Family Support & Young Carers

Family Hub & Early Help  
[Digital family hub – Family Hub](#)  
Young Carers – 01782 793 100  
[Young Carers | North Staffs Carer](#)

## CCE Support & LGBTQ Support

Catch 22 – 01782 237 106  
[Home | Catch22](#)  
LGBTQ -  
[Other LGBTQ+ Support Services – Open Clinic](#)