

Late to school = lost learning

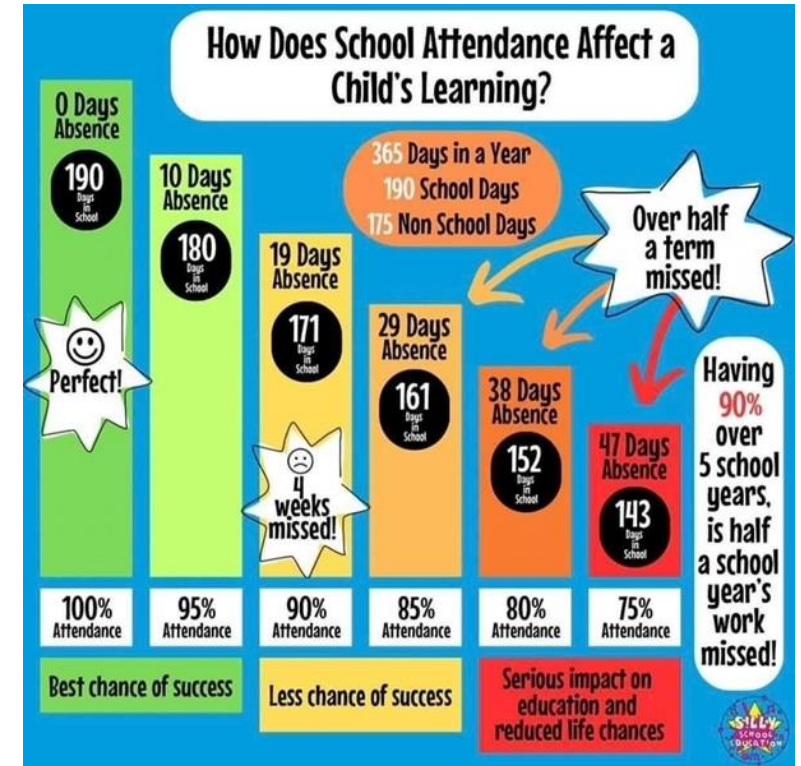
Minutes late	Impact on attendance in a year
5 minutes late per day =	3 days lost each year
15 minutes late per day =	9 days lost each year
30 minutes late per day =	19 days lost each year
45 minutes late per day =	28 days lost each year
60 minutes late per day =	38 days lost each year

Every school day counts BUT every minute is equally important!!

ATTENDANCE & PUNCTUALITY



Your Child's Good Attendance and Punctuality is YOUR Legal Responsibility. Ensure your child is on time and attending as much as possible.



Medical appointments

Make appointments, where possible, outside of school hours. If this is not possible students should attend school for as much of that day as possible. Email in or show the appointment card/letter so the absence can be authorised.

Holidays Any holidays, during term time, will not be authorised. A leave of absence request must be completed in advance - forms can be obtained from the School website or the office. Parents/ carers may be issued with a penalty notice if your child is absent due to a holiday and your child may be taken off roll.

Why is it important?

Regular school attendance is vital for success, relationships and development. Excellent attendance supports learning, relationships, confidence and prepares students for life beyond education

Absence guide Inform us via Studybugs before 9.30 am. Leave a message each morning your child is absent or if they are absent due to an appointment - this is a safeguarding requirement.

If we do not hear from you, then a phone call will be made and we may conduct a home visit. Please let us know if we can support you in any way.