

DIARY DATES : SEPTEMBER

Wednesday 3rd	8.45 a.m.	School Opens
Friday 26th		Spanish Day
Monday 13th October		School Photographs. Nursery pupils and all siblings.
Tuesday 14th October		School Photographs YR-Y6. Pre-school from 8.00 a.m.
Thursday 16th October		School Photographs YR-Y6. Pre-school from 8.00 a.m.
Monday 20th October		Y6 to Stanley Head

HOLIDAY DATES

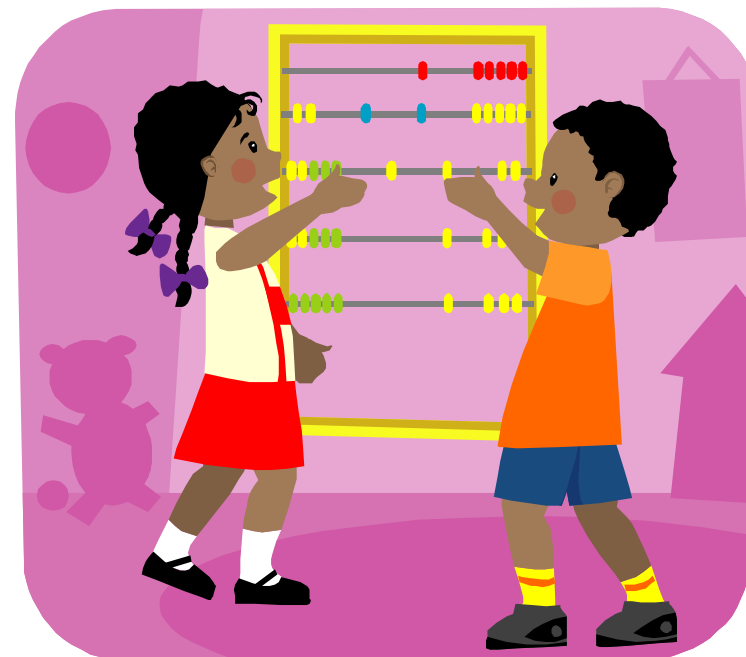
Wed. 3rd September	8.45 a.m.	School Opens
Fri. 24th October	3.15 p.m.	School Closes
Mon. 3rd November	8.45 a.m.	School Opens

ASSEMBLY DATES

1st October	Y6	Harvest Assembly
8th October	Y5	
15th October	Y2	

For further information please contact:
Hanley St. Luke's CofE Aided Primary School
 Tel. 01782 234390 Fax: 01782 236509
 E-mail: stluke@sgfl.org.uk
 Website: www.hanleystlukes.com

St Lukian Newsletter



September 2014



Welcome back to all! I hope everyone has had a great summer break. I extend a warm welcome to our new pupils and families.

We welcome – Miss James (RS), Mr Woods (KS2), Mr Cordon (6L), Miss Phelan and Miss Meakin (RL) to our staff team.

Dinner Money reminder – just a reminder that for Y3 to Y6 dinner money is £2.20 per day, £11.00 per week. Please send the money for the week in a sealed envelope, marked with your child's name and class, on the Monday of the week you are paying for.

If you think you might be eligible for free school meals, please do claim them – if you are unsure, or need help with the forms, our office staff will be happy to help you.

Test results – I am really pleased with our test results and they represent a great deal of hard work.

KS2

Reading	L4+	80%	L5	38%	L6	
Writing	L4+	85%	L5	33%	L6	2%
Maths	L4+	85%	L5	33%	L6	6%
Spelling, Punctuation and Grammar	L4+	65%	L5	33%	L6	2%



Well done to our pupils!

Harvest – Our Harvest Festival Service will be held on Wednesday 1st October and will be led by Y6. Everyone welcome! Donations of non-perishable food items for our harvest festival would be much appreciated. More information to follow shortly.



After-school Clubs – will be starting up again soon. Letters inviting participation will be coming out shortly.



Health and Safety – Please ensure that your child does not climb on the walls. Children should not be on the grass verge/slope whilst waiting to enter into school in the morning. This will ensure the safety of all pupils. I thank you for your co-operation in this.

Hairstyles – Please ensure that hairstyles are appropriate for school. Hair should not be coloured or have patterns shaved into it. Thank you.

Uniform – Please ensure that your child wears the correct uniform for school. Our uniform policy can be viewed online at www.hanleystlukes.com or is available from the school office. Staff will be keeping a close eye on uniform to ensure that all of our pupils look smart. Pupils should wear the following:

Boys

Autumn Term 1 – Summer Uniform. Polo shirt (pale blue), Trousers (mid-grey, Shoes (Black), Socks (Grey). Sweatshirt (Royal Blue).

Autumn Term 2 – Winter Uniform. Shirt (Pale Blue), School Tie, Trousers (mid-grey, Shoes (Black), Socks (Grey). Sweatshirt (Royal Blue).

Girls

Autumn Term 1 – Summer Uniform. Polo shirt (pale blue), Skirt/Dress (Mid Grey), Gingham Dress (pale blue & white), Shoes (Black), Socks (Grey), Cardigan/ Sweatshirt (Royal Blue).

Autumn Term 2 - Winter Uniform. Shirt (Pale Blue), School Tie, Skirt/Dress (mid-grey, Shoes (Black), Socks (Grey). Sweatshirt (Royal Blue).

Here's to a great start to a new school year!

Mr M A Barlow
Headteacher